

ACDS.8

# ArtiosCAD Designer Solution

Folding Carton

1,Artios CAD Folding Carton

	資料NO.	ファイル名
Corrugated		
1,Artios CAD Corrugated	ACDS.1	Artios CAD Corrugated & Trays
2,FEFCO		
FEFCO 200series	ACDS.2	FEFCO 200series
FEFCO 300series	ACDS.3	FEFCO 300series
FEFCO 400series	ACDS.4	FEFCO 400series
FEFCO 500series	ACDS.5	FEFCO 500,600series
FEFCO 600series	ACDS.6	FEFCO 700,900series
FEFCO 700series	ACDS.6	FEFCO 700,900series
FEFCO 900series	ACDS.6	FEFCO 700,900series
2b,FEFCO(nur metrisch)	ACDS.7	FEFCO nur metrisch200,400,700serie
Folding Carton		
1,ArtiosCAD Folding Carton	ACDS.8	ArtiosCAD foldingCarton
2,ECMA	ACDS.9	foldingCarton2,ECMA

## ■ 使用マシン

プリンター

**UJF-6042**

UV PRINTER



カッティングプロッタ

**CFL-605RT**



## ■ 使用インク

LH-100

## ■ 使用紙

コートボール紙 230g

## ■ 使用ラミネートフィルム

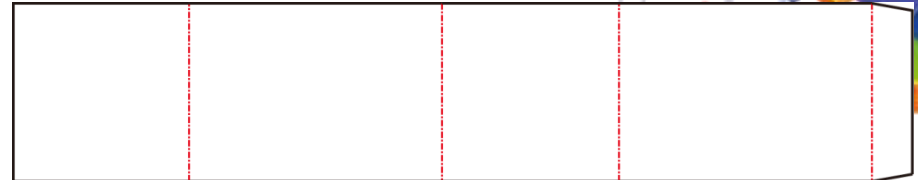
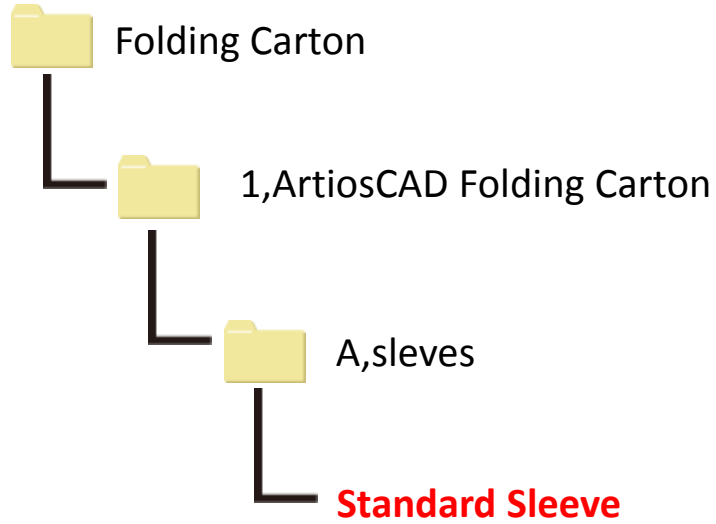
PPホットラミ 9327KA × 500 25μ

# A,sleves

ACDS.8-1

File name

## Standard Sleeve

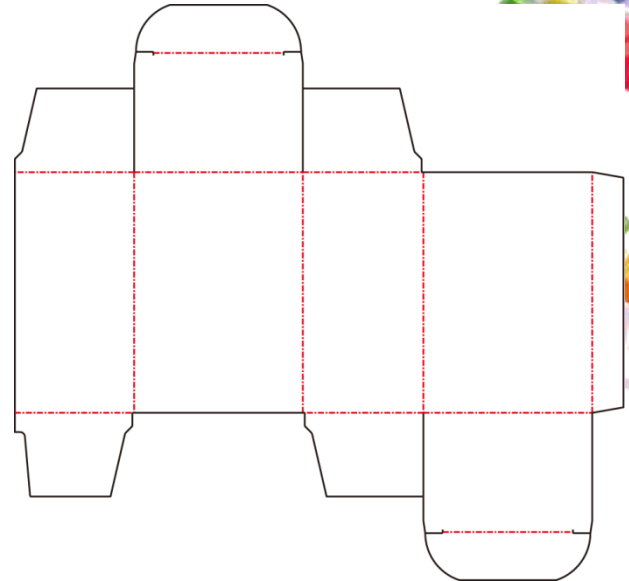
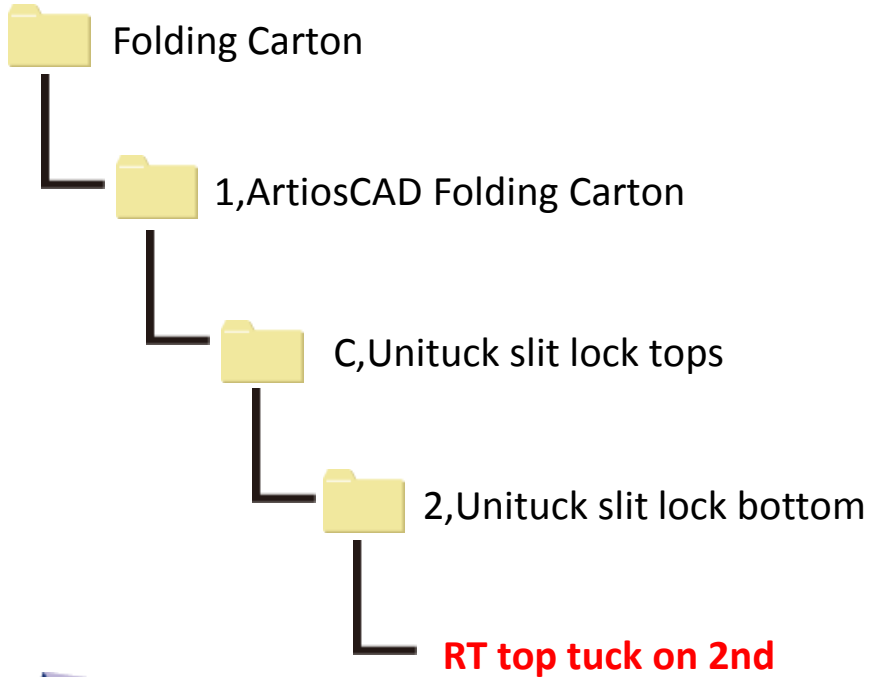


# 2,Unituck slit lock bottom

ACDS.8-2

File name

## RT top tuck on 2nd

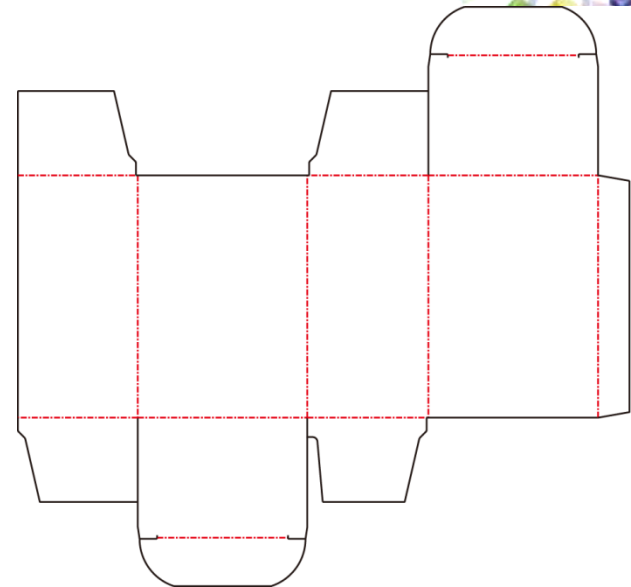
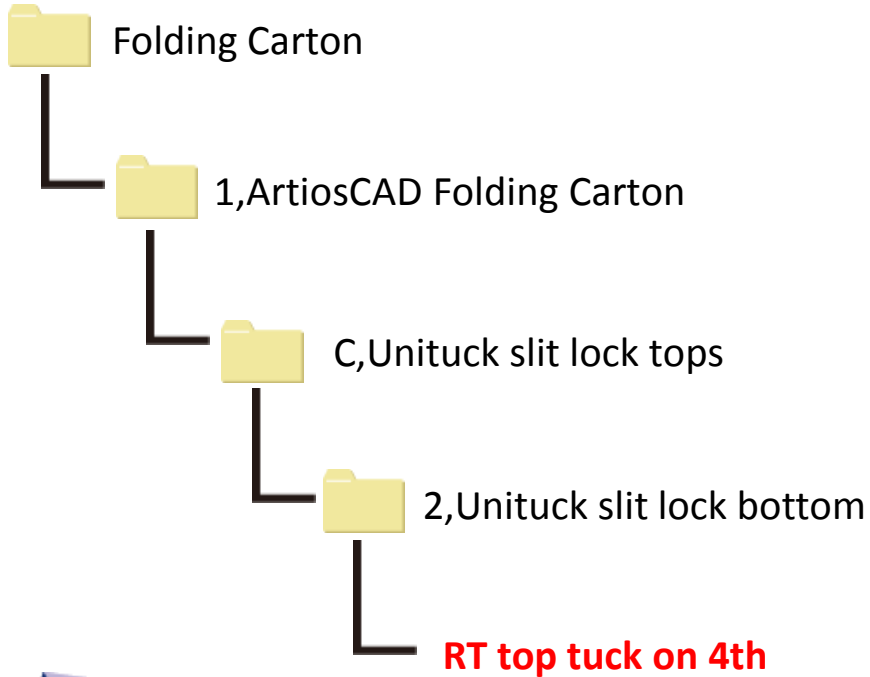


# 2,Unituck slit lock bottom

ACDS.8-3

File name

## RT top tuck on 4th

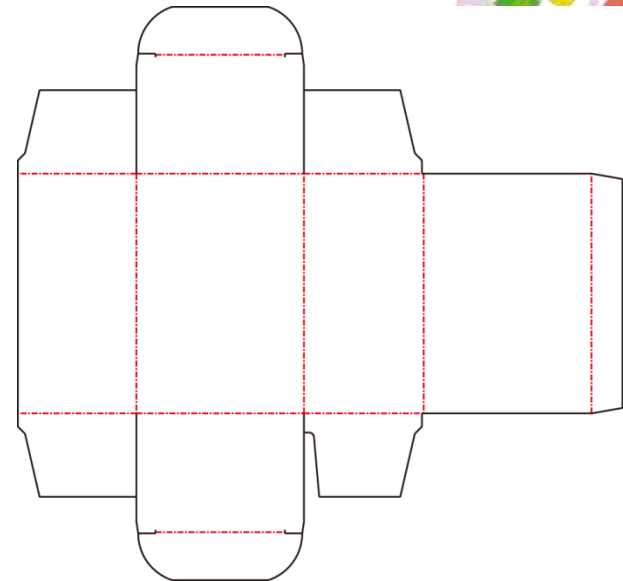
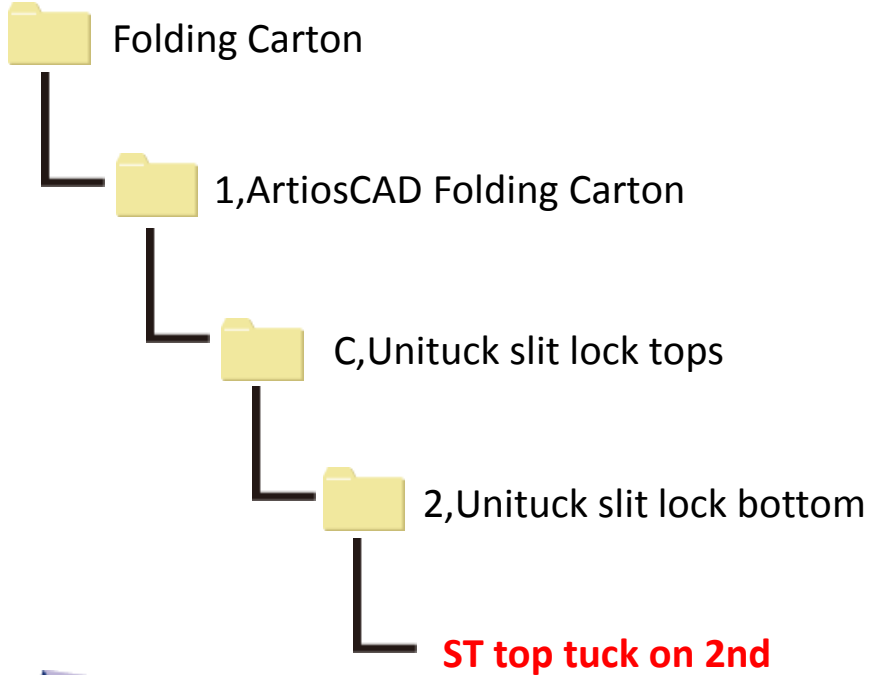


# 2,Unituck slit lock bottom

ACDS.8-4

File name

## ST top tuck on 2nd

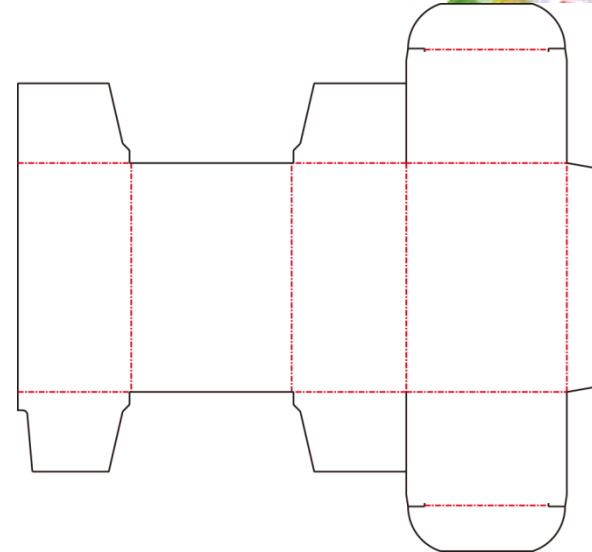
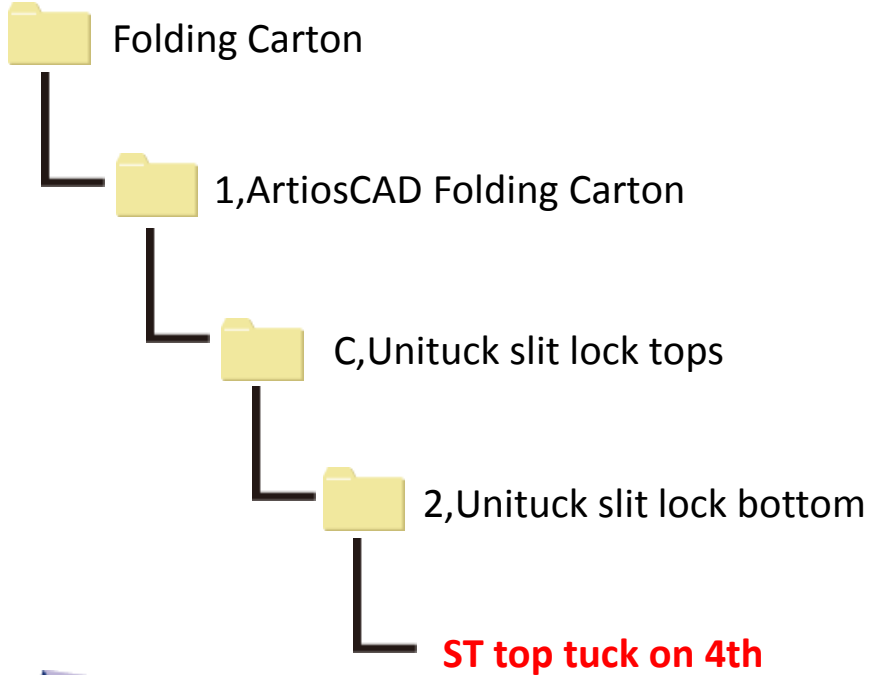


# 2,Unituck slit lock bottom

ACDS.8-5

File name

## ST top tuck on 4th

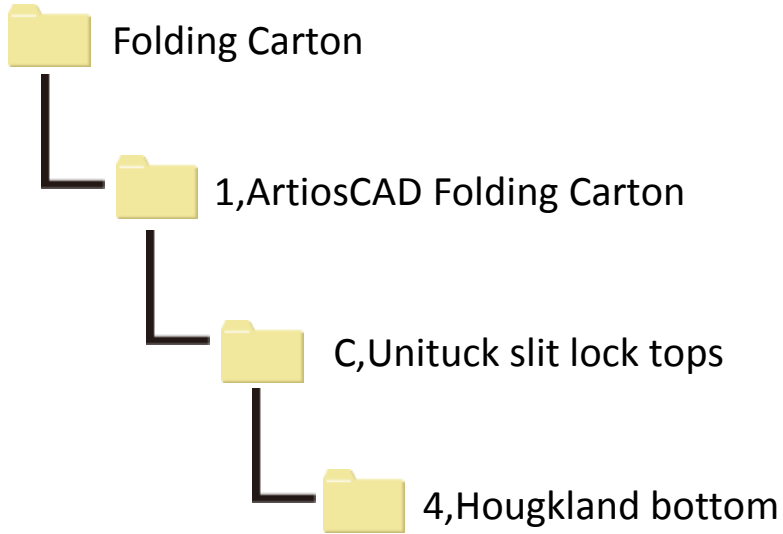


# 4,Hougkland bottom

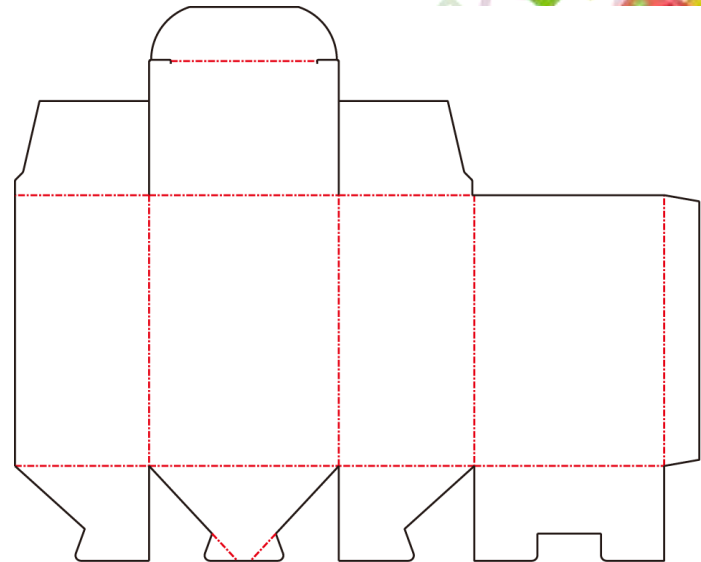
ACDS.8-6

File name

**Tuck on 2nd tab on 2nd**



**Tuck on 2nd tab on 2nd**



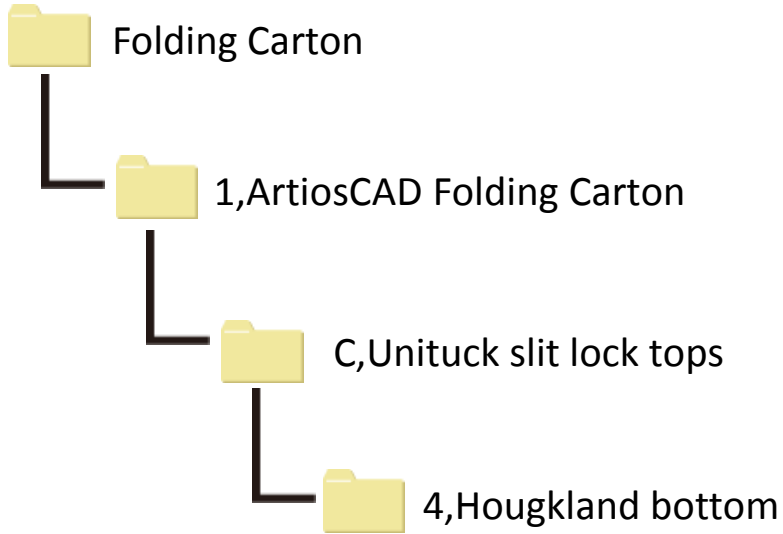


# 4,Hougkland bottom

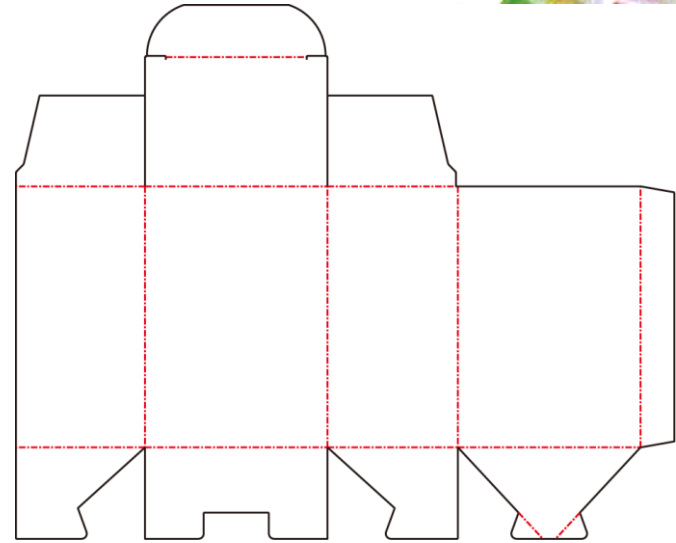
ACDS.8-7

File name

**Tuck on 2nd tab on 4th**



**Tuck on 2nd tab on 4th**

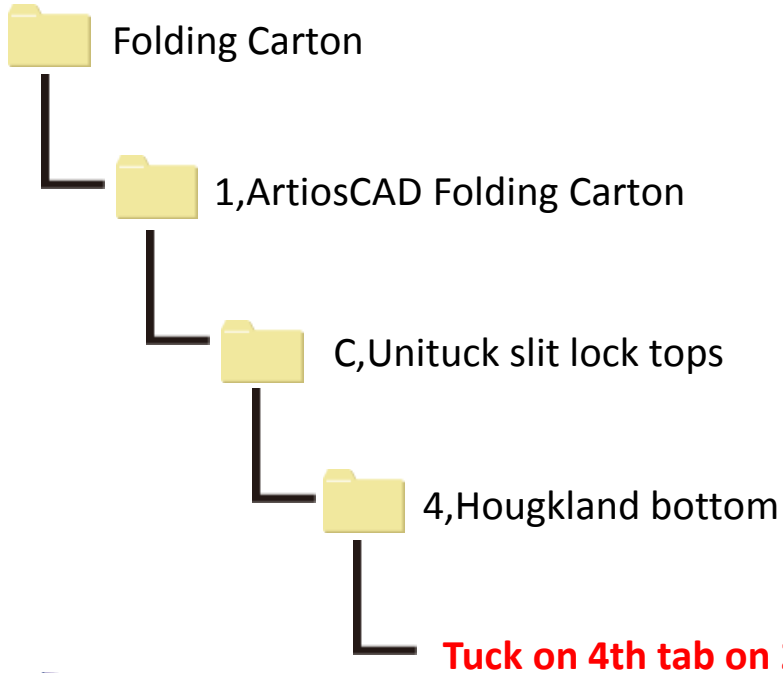


# 4,Hougkland bottom

ACDS.8-8

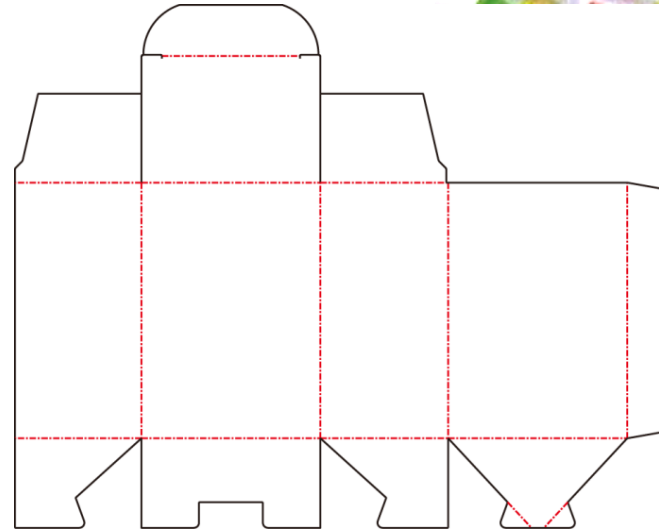
File name

**Tuck on 4th tab on 2nd**



**Tuck on 4th tab on 2nd**

**Mimaki™**

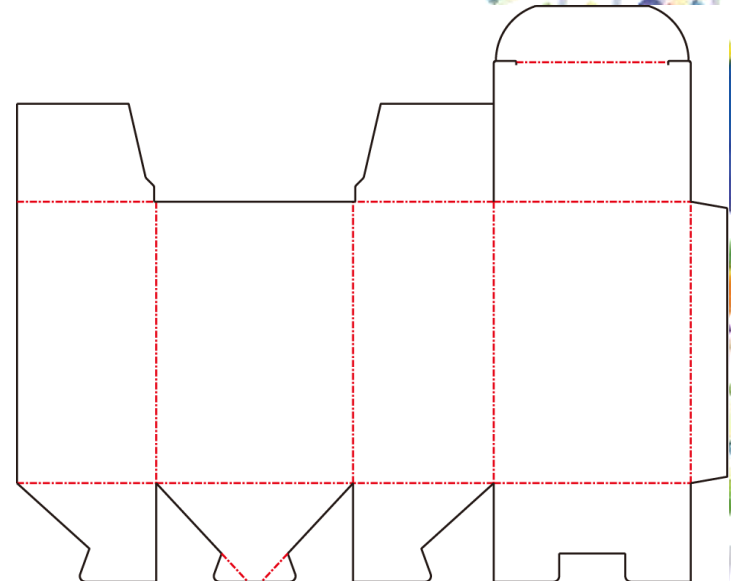
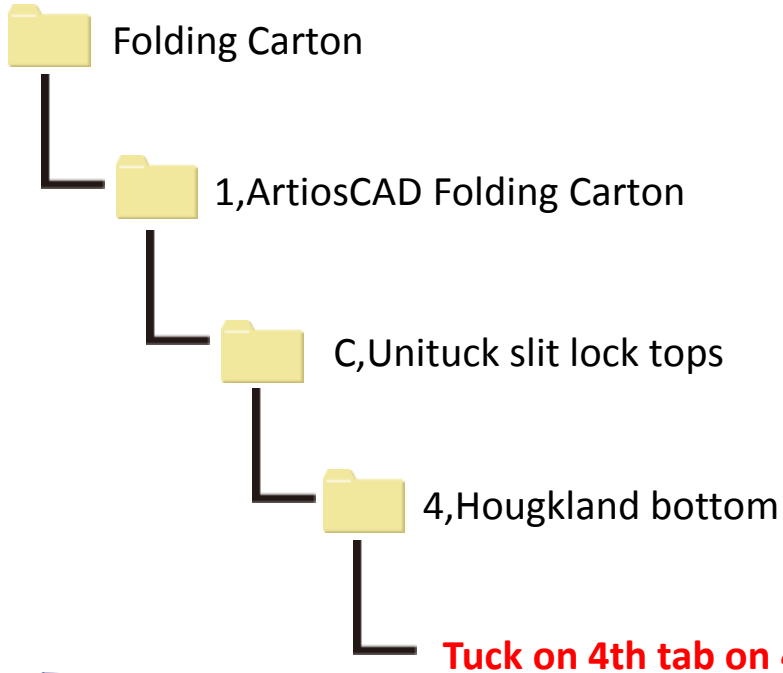


# 4,Hougkland bottom

ACDS.8-9

File name

**Tuck on 4th tab on 4th**



# 6,Inturn auto bottom

ACDS.8-10

File name

## Tuck top on 2nd

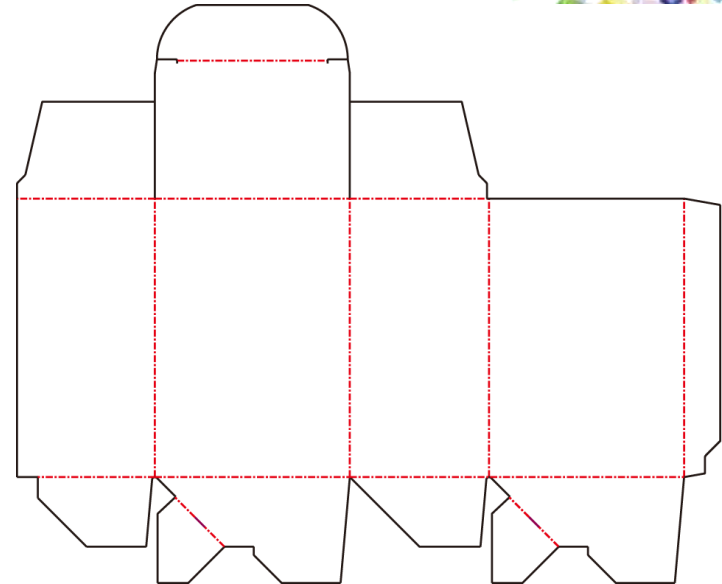
Folding Carton

1,ArtiosCAD Folding Carton

C,Unituck slit lock tops

6,Inturn auto bottom

**Tuck top on 2nd**

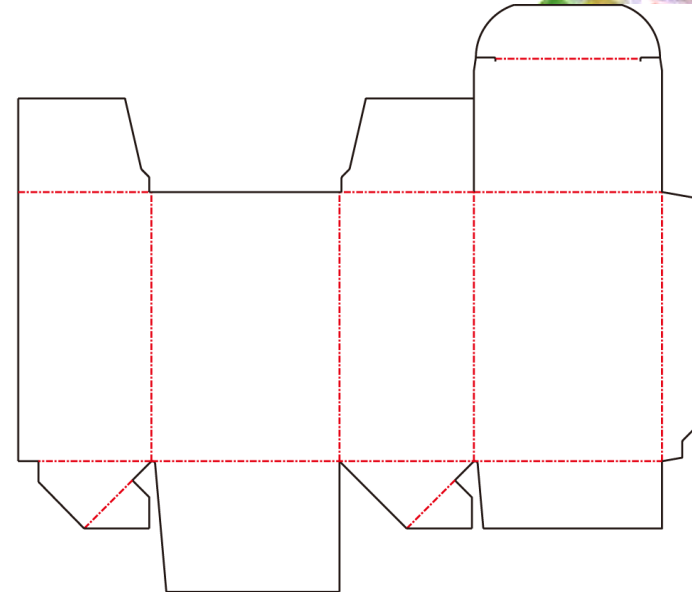
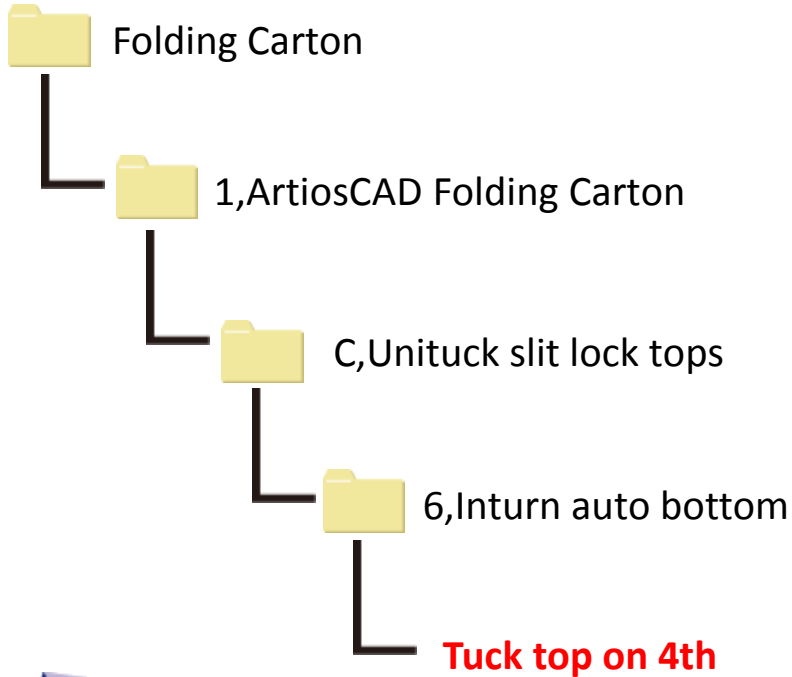


# 6,Inturn auto bottom

ACDS.8-11

File name

## Tuck top on 4th

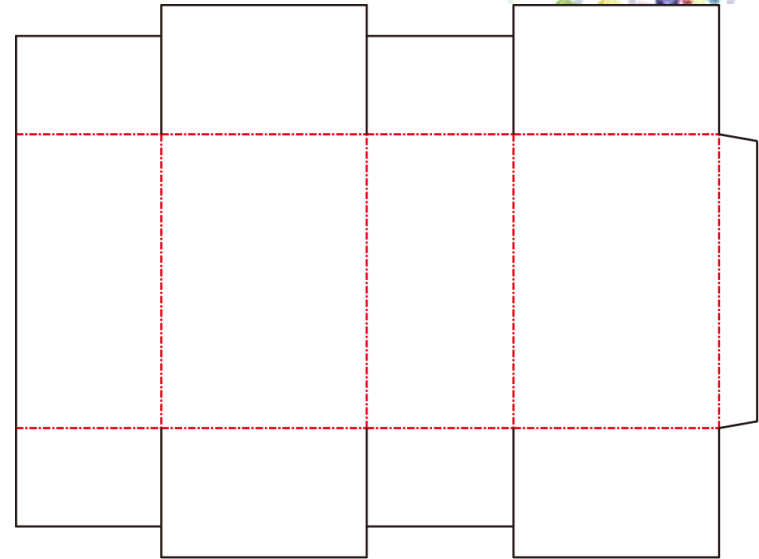
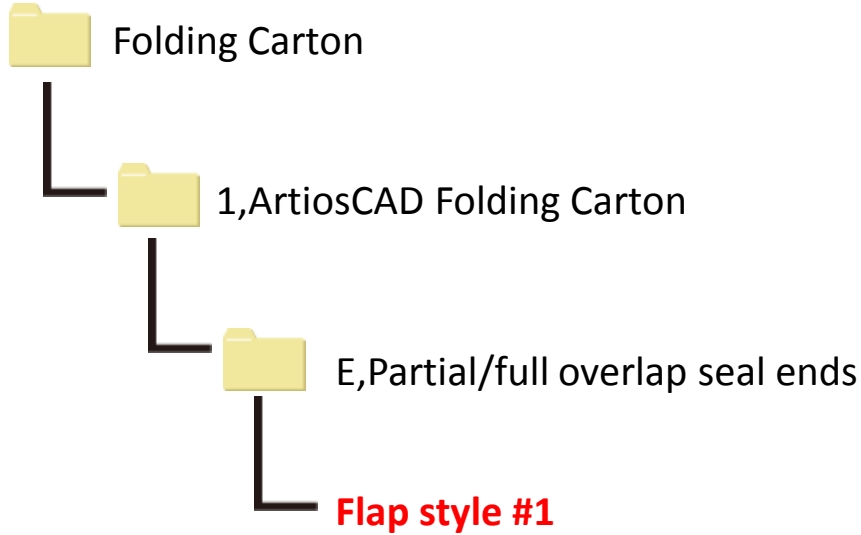


# 6,Inturn auto bottom

ACDS.8-12

File name

## Flap style #1



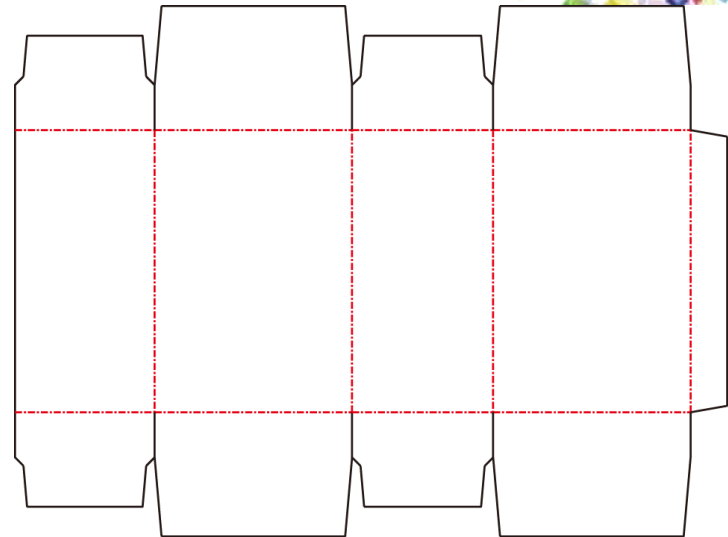
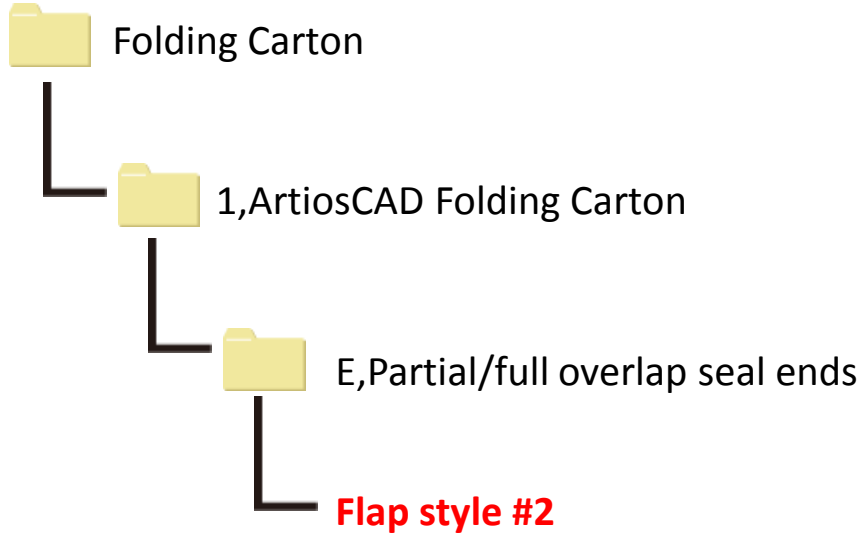
Mimaki™

# 6,Inturn auto bottom

ACDS.8-13

File name

## Flap style #2



Mimaki™

# 6,Inturn auto bottom

ACDS.8-14

File name

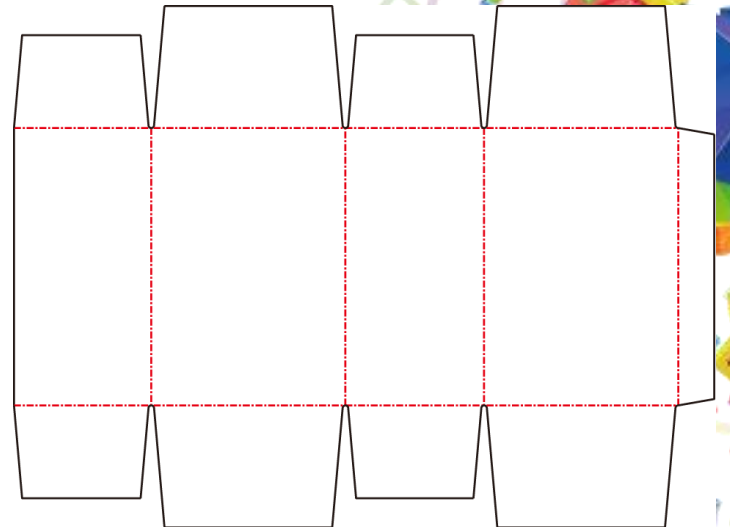
## Flap style #3

Folding Carton

1,ArtiosCAD Folding Carton

E,Partial/full overlap seal ends

**Flap style #3**



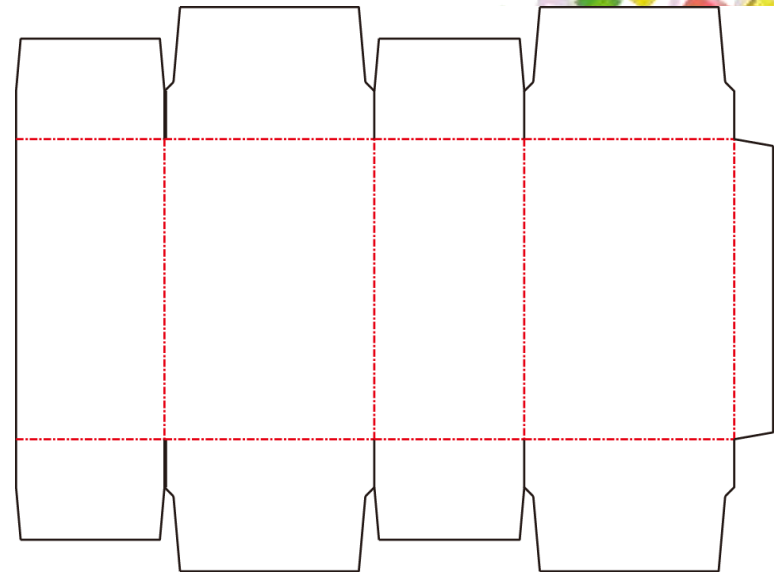
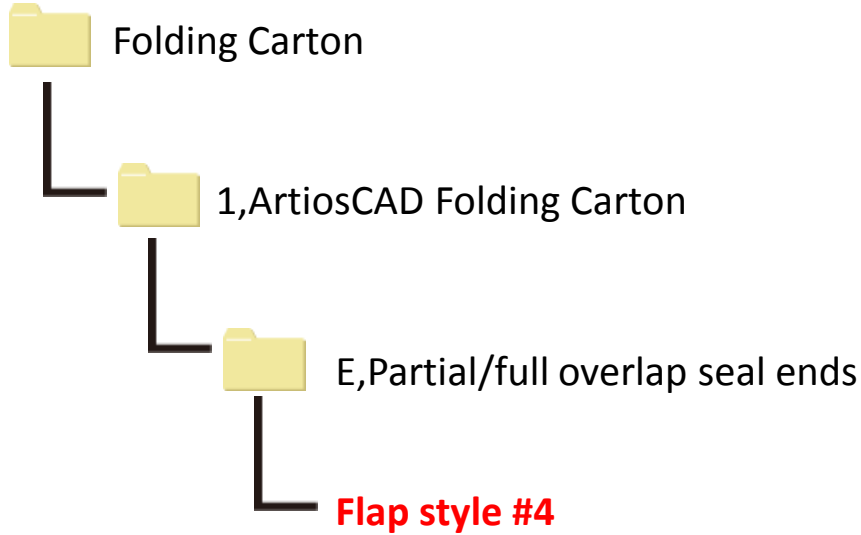


# 6,Inturn auto bottom

ACDS.8-15

File name

## Flap style #4



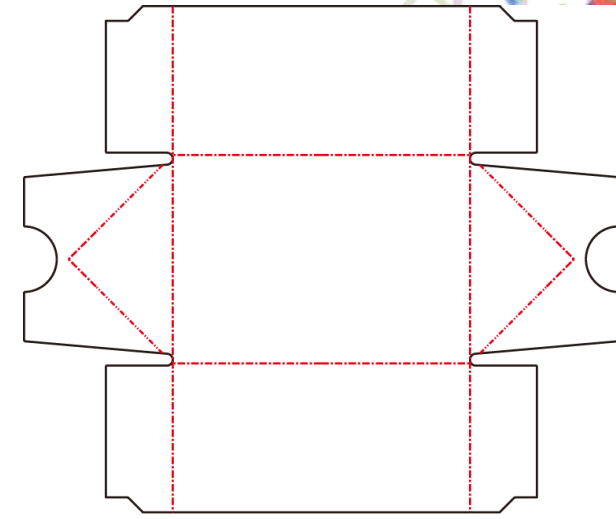
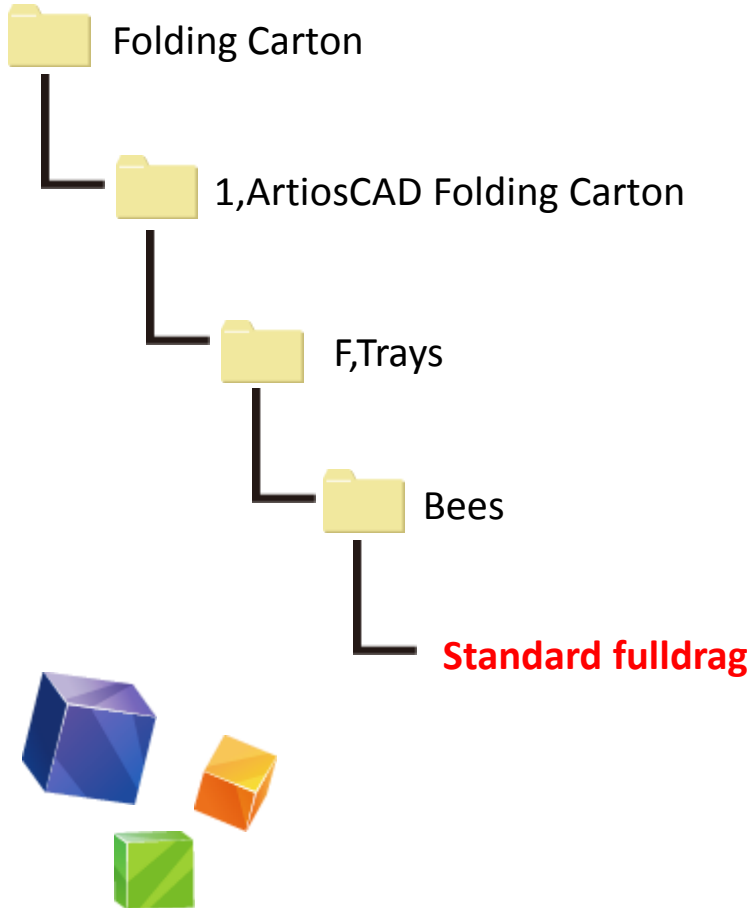
Mimaki™

# Bees

ACDS.8-16

File name

## Standard fulldrag

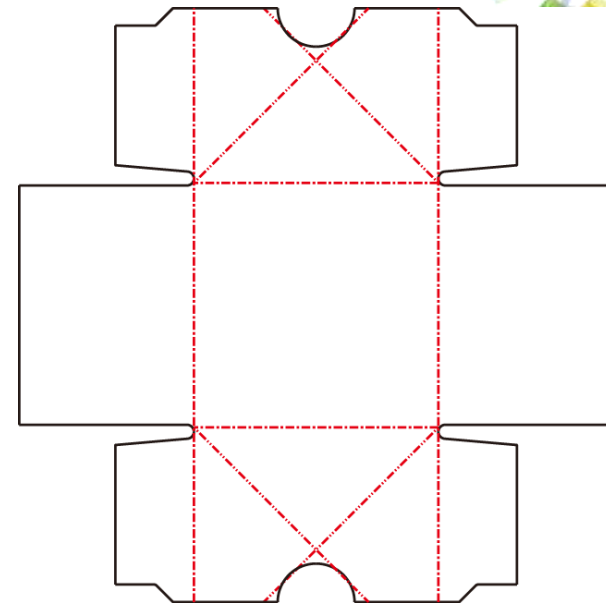
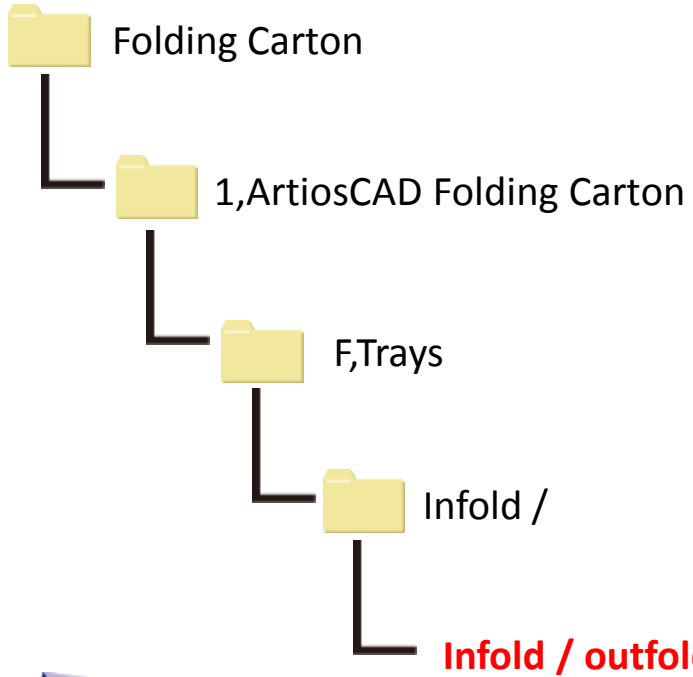


# Infold /

ACDS.8-17

File name

## Infold / outfold



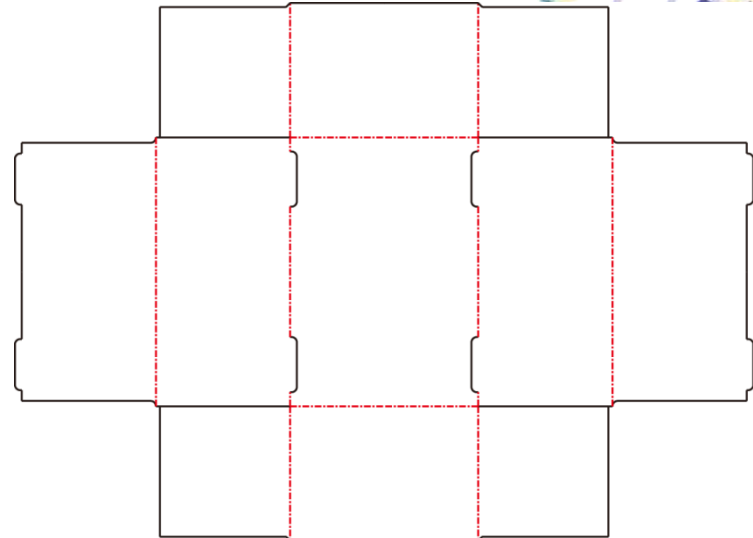
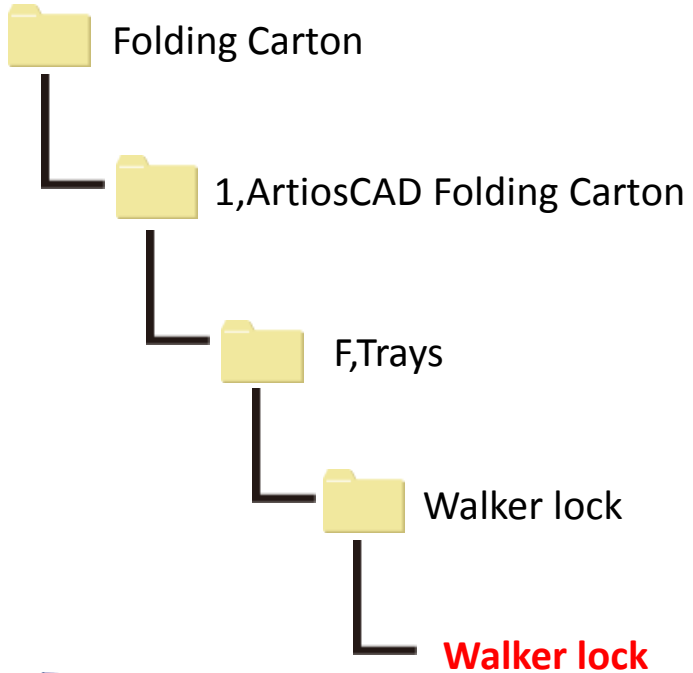
# Walker lock

ACDS.8-18

MIMAKI™

File name

## Walker lock



# Walker lock

ACDS.8-19

File name

## Walker lock 2/tri seal lid

